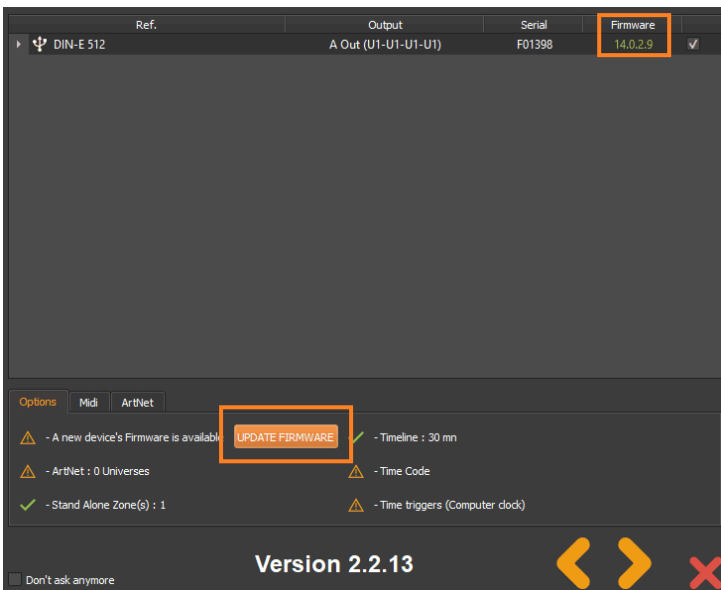


How to update firmware

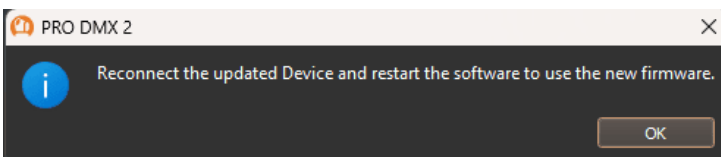
Update the device via the software opening window



Click on the green version number or the 'Update firmware' button.

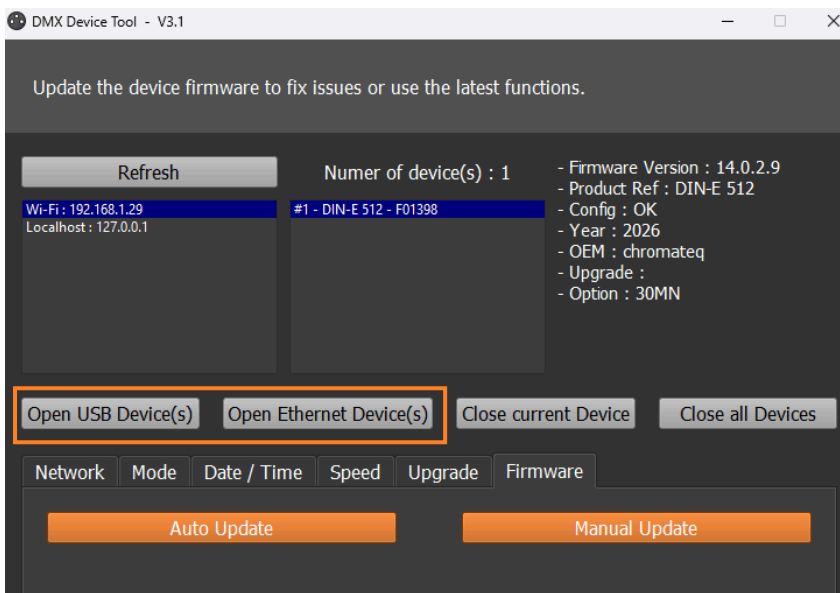


Click on the 'Update' button



After the update, confirm, then unplug and reconnect the device.

Update the device via the DeviceTool



1. Open the device according your connection mode, USB or Ethernet.
2. Click on 'Auto Update' Button to start the update.
3. Unplug and reconnect the device.


How to force a device into bootloader mode

DIN-E	Connect M/S Clock and Data then power on
CQSA-E (2)	Hold + and - button then power on via USB or jack plug
CLUB-E	Hold 5s the button and power on at the same time

How to update firmware in bootloader mode

Update the device when it is in bootloader mode.

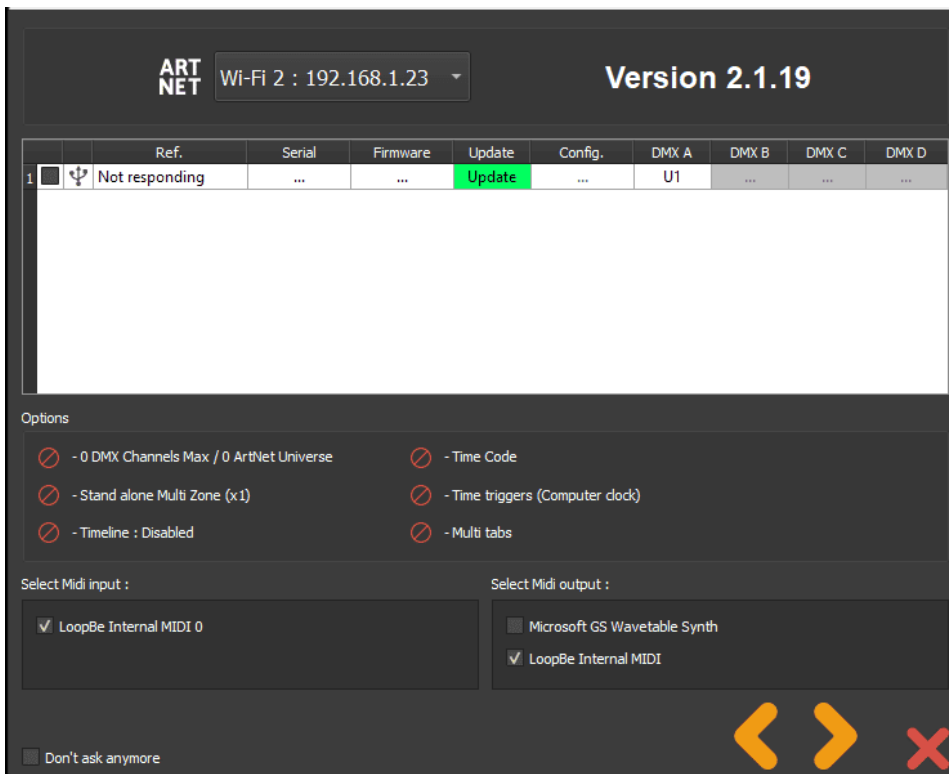
Bootloader mode failure:

- The USB signal LED(s) flash rapidly
- The LED display shows BL  (CQSA/CQSA-E/CQSA-E2/SLIM)
- The device is not detected by the software, which indicates that an update is required

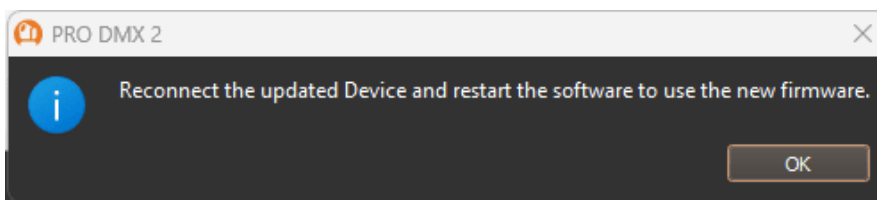
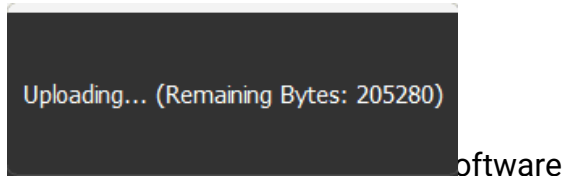
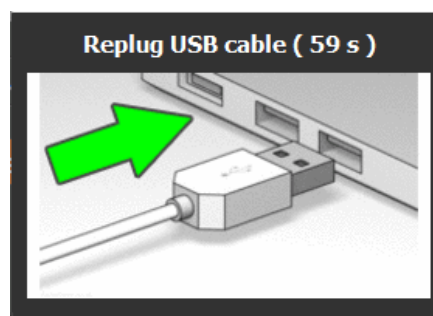
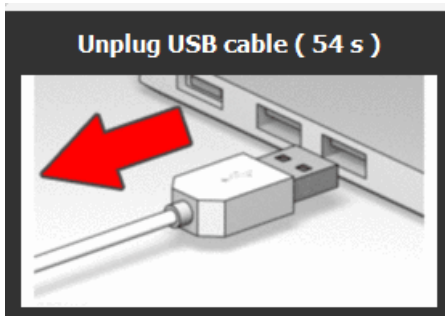
Update the device via the software opening window

Open the software :

1. Click on "update"

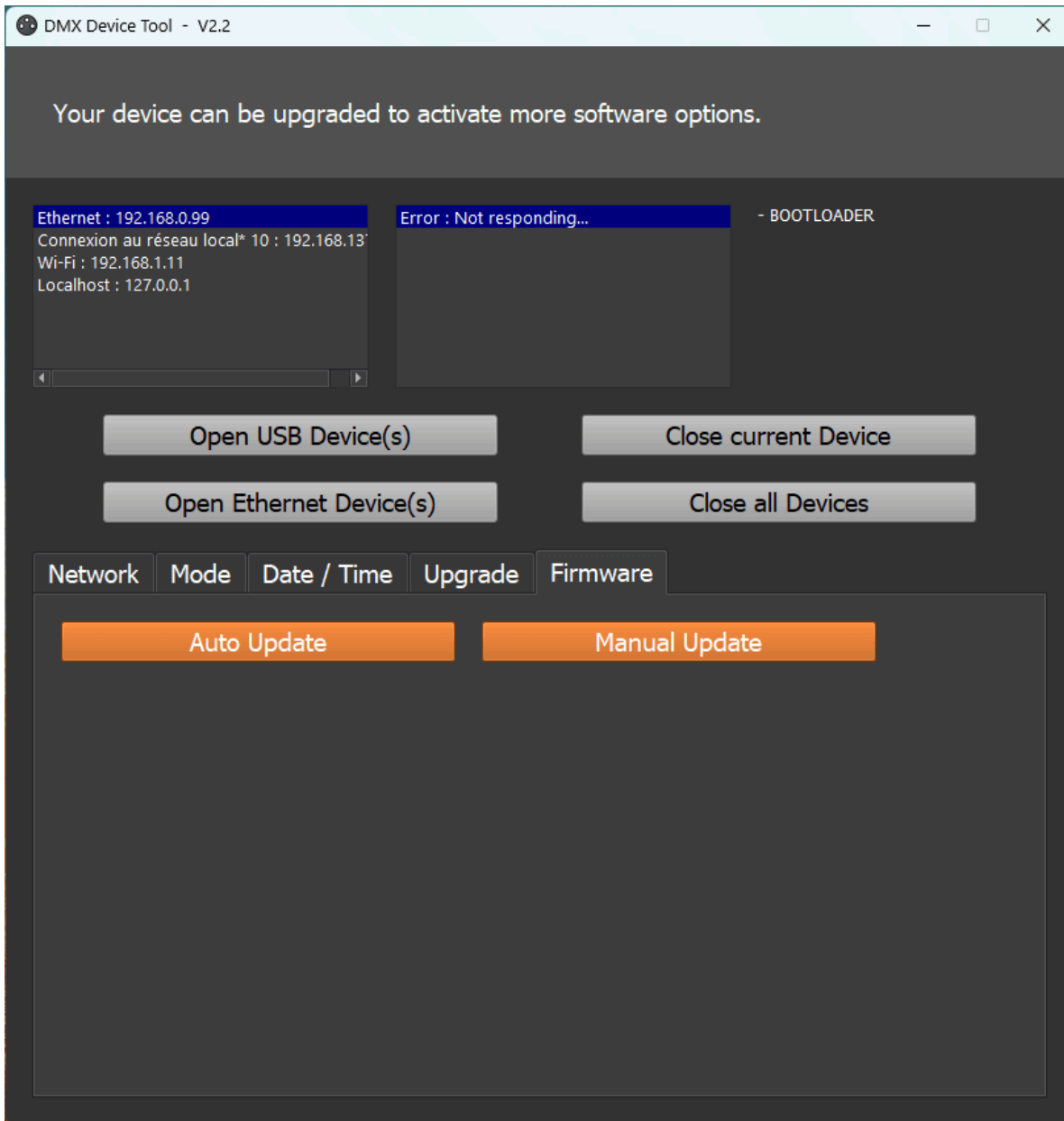


2. Unplug and replug USB cable, wait until the end of the update.

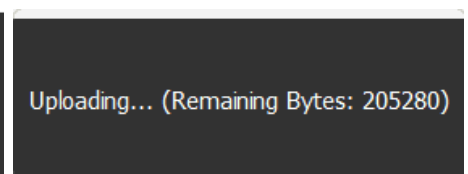
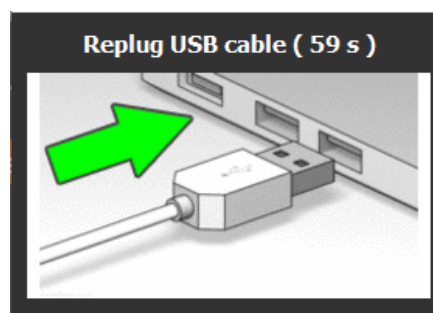
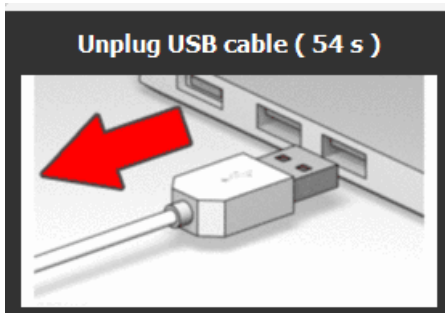


Update the device via the DeviceTool

1. Connect your device via the USB port
2. Click "Open USB Device"
3. Inside "Firmware" tab, click "Auto Update"



4. Unplug and replug USB cable, wait until the end of the update.



5. Close the DeviceTool and unplug replug one more time the device to start on the new firmware.
6. Then use the device normally